

# Isolated Pulmonary Mucormycosis

Supplementary material

Figure 4: Bronchoscopy : Mass like lesion infiltrating and obstructing the R Upper lobe bronchus

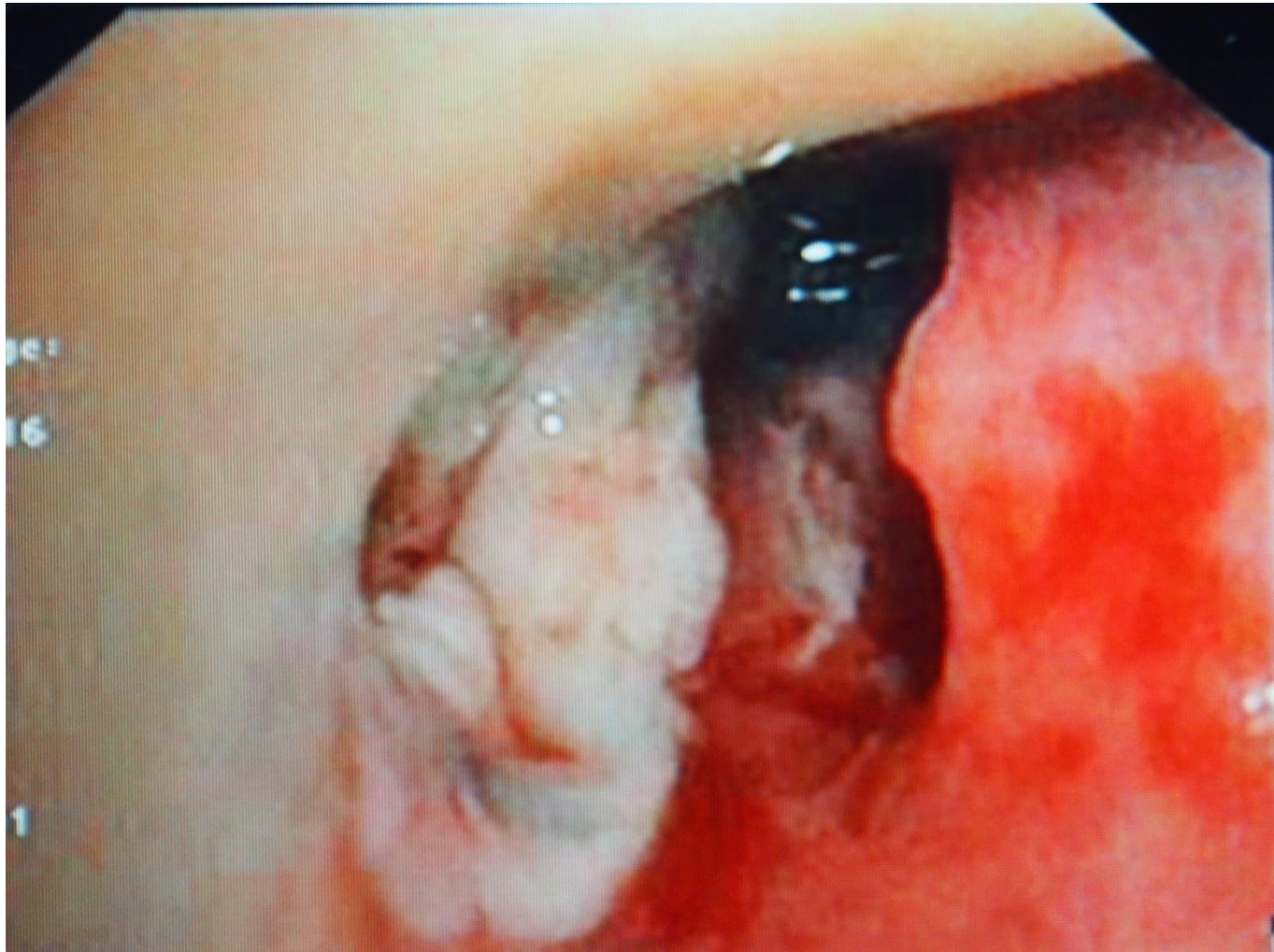


Figure 5 : HE stain of the lung mucosal biopsy shows dense colonies of broad, non-septate as well as irregular branching hyphae -zygomycetes (mucormycosis) group in a necrotic background

