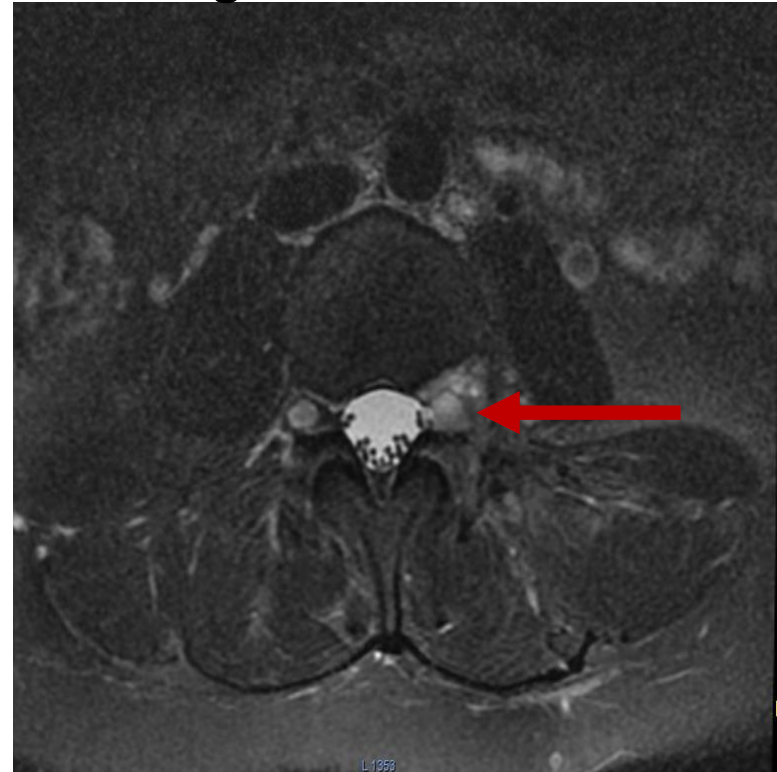


## Supplementary Fig 1

**1a. T2 weighted sagittal MRI of Lumbar spine: Recurrent T2 hyperintense lesion involving the L3 foramina (red arrow).**



**1b. T2 weighted axial lumbar spine MRI image: Recurrent lesion hyperintense on T2 seen involving the left L3 nerve root**



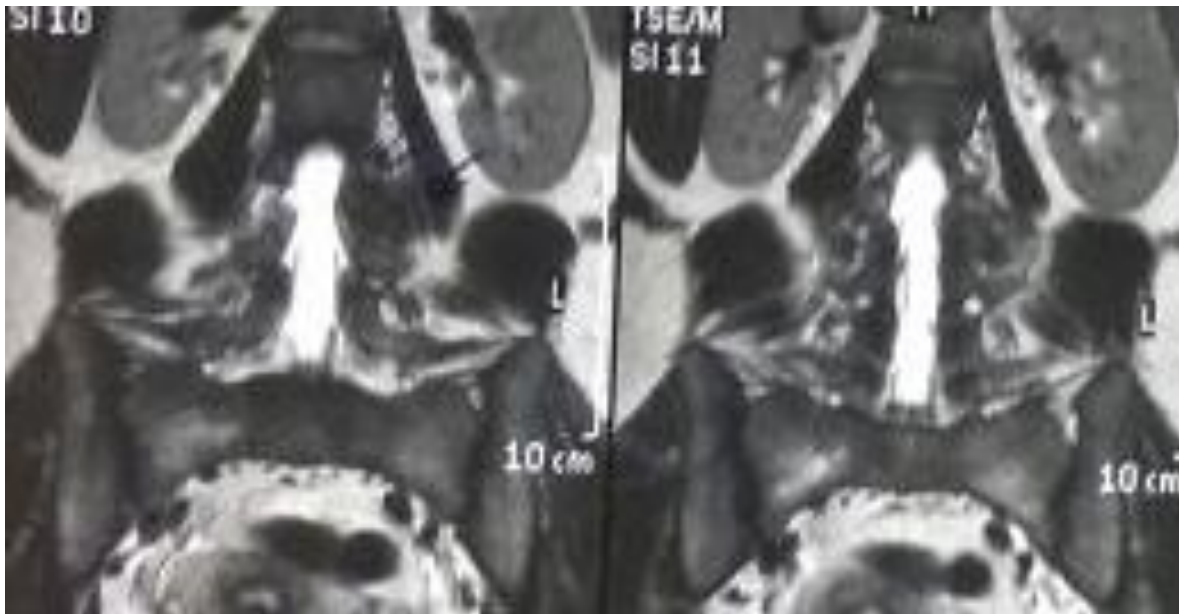
**1c. Coronal Post Contrast MRI  
Lumbar Spine: Intraspinal  
recurrence with paraspinal  
deposits seen enhancing on  
contrast scan (red arrow)**



**1d. Axial Post Contrast MRI  
Lumbar spine: Para-spinal psoas  
muscle deposits enhancing on  
contrast image (red arrow)**



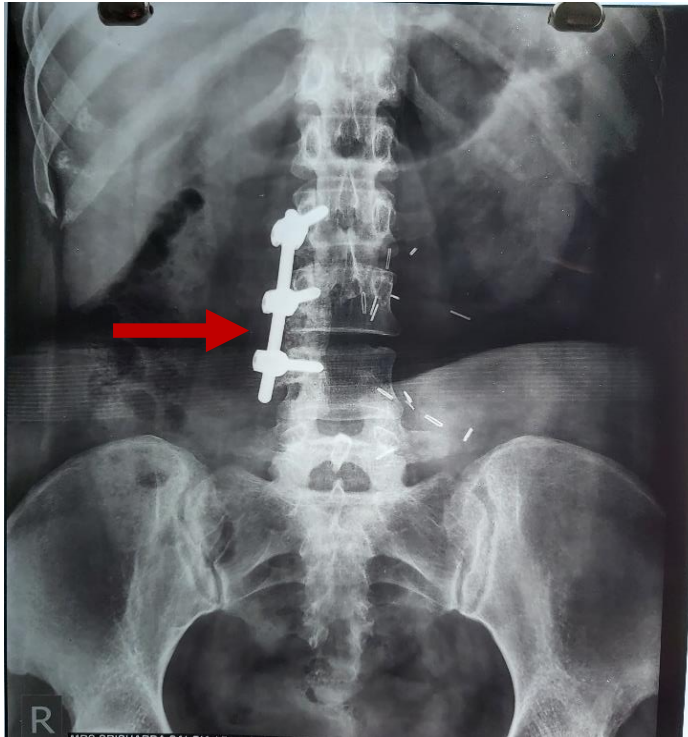
**le: T2 weighted coronal image showing the left extraforaminal hypointense lesion (arrow)**



# 1f: T1 weighted sagittal MRI showing the L3-4 left hyperintense well defined lesion with smooth margins

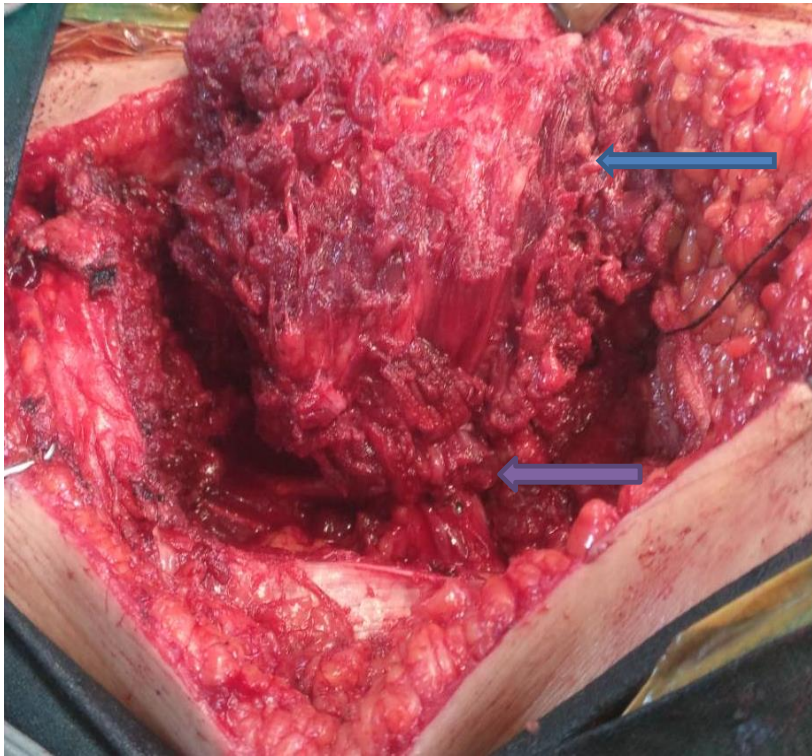


**1g. X-ray Lumber spine AP view  
after second surgery showing the L2-4 pedicle screw and rod  
fixation unilaterally (red arrow)**



## Figure 2

**a. Prior to Radical Resection**



**b. Post Radical Resection**

