

Inverse hypopyon (hyperoleon) at the posterior segment in pathological myopia

Koushik Tripathy,^{1,2} Rohan Chawla²

¹Department of Vitreoretina and Uvea, ICARE Eye Hospital and Post Graduate Institute, Noida, India

²Department of Ophthalmology, All India Institute of Medical Sciences (AIIMS), New Delhi, India

Correspondence to
Dr Rohan Chawla,
dr.rohanrpc@gmail.com

Accepted 20 November 2017

DESCRIPTION

A 54-year-old woman presented a year after vitreoretinal surgery with silicone oil injection in the left eye. The left eye showed emulsified silicone oil in the anterior chamber and a posterior chamber intraocular lens. The fundus revealed a posterior staphyloma, attached retina and whitish emulsified silicone bubbles with a horizontal lower border giving rise to inverse hypopyon in the posterior pole (figure 1).

Inverted hypopyon at the posterior pole¹ is a rare finding which can be seen in patients with posterior staphyloma and long-term silicone oil tamponade.² The emulsified silicone oil being lighter than fluid floats superiorly giving rise to this appearance mostly in the anterior segment (hyperoleon).³ In our case, the emulsified silicone oil bubbles (asterisks, figure 2) were limited within a pocket of residual hyaloid/membrane (arrows, figure 2) at the edge of the staphyloma leading to an appearance of an inverted hypopyon in the posterior segment.

Contributors KT managed the patient. Both KT and RC wrote the manuscript, approved the current form and agreed to be accountable for the work.

Competing interests None declared.

Patient consent Obtained.

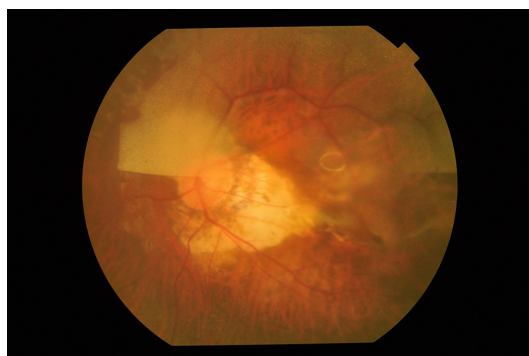


Figure 1 The fundus photo shows chorioretinal atrophy temporal to the optic disc and emulsified silicone oil bubbles with a horizontal lower level suggestive of inverse hypopyon.

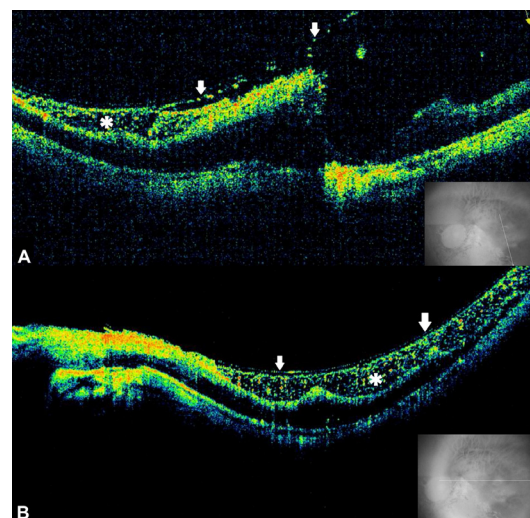


Figure 2 Horizontal optical coherence tomography image (A) and oblique vertical scan (B) revealed a membrane (arrows) with hyperreflective droplets of emulsified silicone oil bubbles (asterisks) trapped between the membrane and the retina.

Learning points

- ▶ Inverse hypopyon or hyperoleon is a feature of emulsified silicone oil.
- ▶ The inverse hypopyon may be seen in the anterior chamber or rarely in the posterior segment.

Provenance and peer review Not commissioned; externally peer reviewed.

© BMJ Publishing Group Ltd (unless otherwise stated in the text of the article) 2017. All rights reserved. No commercial use is permitted unless otherwise expressly granted.

REFERENCES

- 1 Filloy A, Rubio MJ, Comas C, *et al*. Inverted hypopyon in the posterior pole. *Retina* 2013;33:1088–9.
- 2 Parlak M, Dönmez O, Reichel M, *et al*. Inverses Pseudohypopyon bei degenerativer Myopie. *Der Ophthalmologe* 2014;111:267–9.
- 3 Tripathy K, Sharma YR. Inverted hypopyon in the eye. *BMJ Case Rep* 2016;bcr2016214638.



To cite: Tripathy K, Chawla R. *BMJ Case Rep* Published Online First: [please include Day Month Year]. doi:10.1136/bcr-2017-223416

Copyright 2017 BMJ Publishing Group. All rights reserved. For permission to reuse any of this content visit <http://group.bmj.com/group/rights-licensing/permissions>.
BMJ Case Report Fellows may re-use this article for personal use and teaching without any further permission.

Become a Fellow of BMJ Case Reports today and you can:

- ▶ Submit as many cases as you like
- ▶ Enjoy fast sympathetic peer review and rapid publication of accepted articles
- ▶ Access all the published articles
- ▶ Re-use any of the published material for personal use and teaching without further permission

For information on Institutional Fellowships contact consortiasales@bmjgroup.com

Visit casereports.bmj.com for more articles like this and to become a Fellow