

Unusual case of nasal obstruction

Chloe Swords, Paula Coyle, Asad Qayyum, Ajmal Masood

Department of ENT,
Peterborough City Hospital,
Peterborough, UK

Correspondence to

Miss Chloe Swords,
chloeswords@doctors.org.uk

Accepted 1 February 2017

DESCRIPTION

A man aged 15 years was referred to the otolaryngology department with a 5-year history of persistent nasal blockage and nocturnal mouth breathing. He did not report any additional sinonasal, aerodigestive tract or neurological abnormalities. Flexible nasendoscopic examination revealed adenoidal hypertrophy occluding the choanae bilaterally.

Adenoidectomy by monopolar suction diathermy under direct visualisation was performed. Following adenoidectomy, intraoperative visualisation of the surgical site revealed a well-circumscribed left of midline soft tissue swelling of the posterior pharyngeal wall.

Postoperative MRI illustrated a destructive lesion arising from the left C2/3 nerve root with

extracanalicular and intracanalicular components, the latter of which was causing severe cervical cord compression (figure 1A, B). The radiological diagnosis was consistent with neurofibroma. The patient was urgently referred to neurosurgery for definitive management. Although asymptomatic, neurosurgical evaluation demonstrated an upper motor neuron syndrome affecting the upper limbs and the left lower limb. Hoffman's sign was present on the left. The patient underwent a cervical laminectomy C2–C4 with resection of the lesion. The final histological diagnosis was chordoma, with no evidence of de-differentiation.

Adenoidectomy is commonly performed via conventional curettage. It is a blind method of removing adenoid tissue transorally relying on digital palpation and surgical experience with peroperative bleeding obscuring the operative field. Alternatively, monopolar suction diathermy involves ablation of adenoids by direct visualisation with an endoscope or laryngeal mirror providing a clear operative view with minimal bleeding.

As described below, in this case, the differential is wide. The initial radiological diagnosis was that of neurofibroma; however, eventual histology confirmed chordoma. This diagnostic difficulty on MRI has been reported in the literature as both chordomas and neurofibromata demonstrate low-to-intermediate T1 and high T2 signal intensity

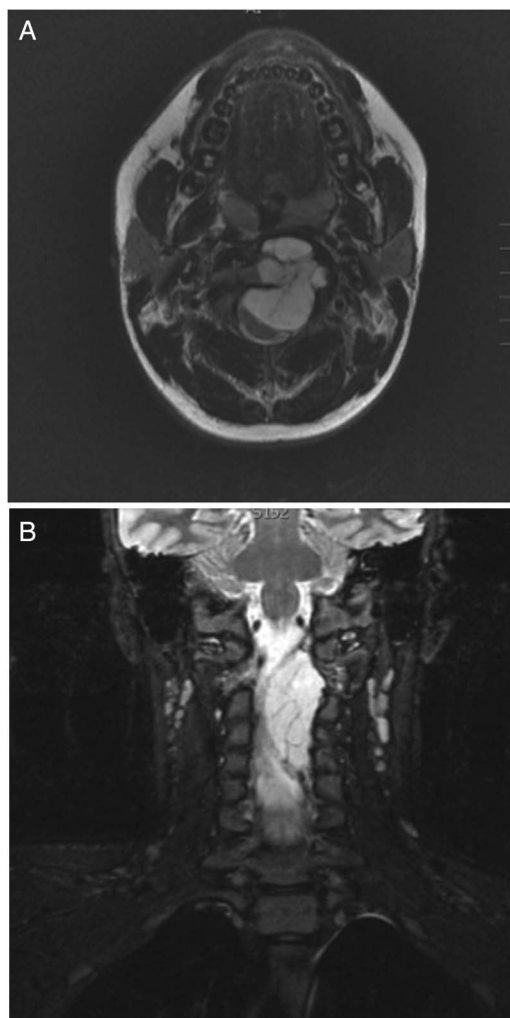


Figure 1 (A) Axial T2-weighted MRI scan illustrating a lesion arising from the left C2/3 nerve root. (B) Coronal STIR sequences illustrate a lobulated hyperintense mass extending over a distance of 6 cm from the top of the odontoid peg to the C4/5 disc space.

Learning points

- ▶ In the paediatric population, nasal obstruction is usually a symptom of common disease processes such as adenoidal hypertrophy, but it should be remembered, as in this case, that the underlying cause may be multifactorial in origin. Nasal obstruction may be the cardinal presenting symptom for more serious underlying pathology.
- ▶ Visualisation of the nasopharynx at the end of the procedure is crucial for diagnosis of nasal obstruction and complete removal of adenoidal tissue. We would advocate that visualisation with laryngeal mirror or endoscope is good practice when performing adenoidectomy, irrespective of the technique used.
- ▶ Differential diagnoses of nasopharyngeal lesions include normal anatomical structures, such as adenoidal hypertrophy; benign lesions, such as lipoma and neurofibroma; or malignant lesions, such as rhabdomyosarcoma and lymphoma. Other differentials include those of embryonic origin, such as chordoma; or vascular origin, such as aneurysms of the carotid system.



CrossMark

To cite: Swords C, Coyle P, Qayyum A, et al. *BMJ Case Rep* Published online: [please include Day Month Year] doi:10.1136/bcr-2016-218998

on MRI.¹ Chordomas are rare, slow-growing, locally aggressive tumours of notocordal origin that arise along the cranio-coccygeal axis.² Metastases are rare.³

Contributors CS drafted the original manuscript. PC, AQ and AM provided critical appraisal. All authors approved the manuscript prior to submission.

Competing interests None declared.

Patient consent Obtained.

Provenance and peer review Not commissioned; externally peer reviewed.

REFERENCES

- 1 Kotnis N, Goepel J. Paraspinal chordoma mimicking a neurofibroma: a rare but important radiological pitfall. *Skeletal Radiol* 2013;42:443–6.
- 2 Chugh R, Tawbi H, Lucas DR, *et al.* Chordoma: the nonsarcoma primary bone tumour. *Oncologist* 2007;12:1344–50.
- 3 Jiang L, Liu ZJ, Liu XG, *et al.* Upper cervical spine chordoma of C2–C3. *Eur Spine J* 2009;18:293–298; discussion 298–300.

Copyright 2017 BMJ Publishing Group. All rights reserved. For permission to reuse any of this content visit <http://group.bmj.com/group/rights-licensing/permissions>.
BMJ Case Report Fellows may re-use this article for personal use and teaching without any further permission.

Become a Fellow of BMJ Case Reports today and you can:

- ▶ Submit as many cases as you like
- ▶ Enjoy fast sympathetic peer review and rapid publication of accepted articles
- ▶ Access all the published articles
- ▶ Re-use any of the published material for personal use and teaching without further permission

For information on Institutional Fellowships contact consortiasales@bmjgroup.com

Visit casereports.bmj.com for more articles like this and to become a Fellow