

Birt-Hogg-Dubé syndrome: identifying patients at risk of renal cell carcinoma, pulmonary cysts and pneumothoraces

Stephanie Menzies,¹ Aurelie Fabre,² Aoife Lally¹

¹Department of Dermatology, St Vincent's Hospital, Dublin, Ireland

²Department of Histopathology, St Vincent's Hospital, Dublin, Ireland

Correspondence to

Dr Stephanie Menzies, menziess@tcd.ie

Accepted 29 December 2015

DESCRIPTION

A 42-year-old woman attended the dermatology outpatient department (OPD), with a 2–3 year history of multiple firm flesh-coloured papules localised to her cheeks, periauricular and auricular area (figures 1 and 2). These lesions developed when the patient was in her late 30s. They were asymptomatic. She also had multiple fibroepithelial polyps (skin tags). She had a family history of similar skin lesions (2 sisters and her father). Her medical history was significant for mild hidradenitis suppurativa.

A punch biopsy of lesional skin was performed—histology showed focal increase in perivascular dermal connective tissue, in keeping with an angiofibroma (figures 3 and 4). Genetic testing confirmed a heterozygous variant in the folliculin (FLCN) gene, consistent with a diagnosis of Birt-Hogg-Dubé syndrome.

Birt-Hogg-Dubé syndrome is an autosomal-dominant condition. It has characteristic cutaneous findings, including fibrofolliculomas, angiofibromas, fibroepithelial polyps and trichodiscomas.



Figure 2 Multiple similar lesions affecting nasal bridge and ala.



Figure 1 Multiple firm flesh-coloured papules—right post-auricular area.

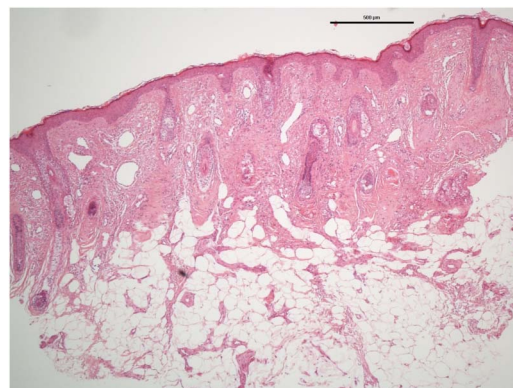


Figure 3 H&E stain—angiofibroma, left earlobe.

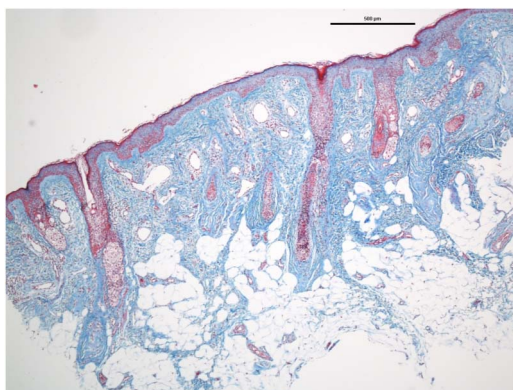


Figure 4 Masson's trichrome—highlighting fibrosis in an angiofibroma, left earlobe.



CrossMark

To cite: Menzies S, Fabre A, Lally A. *BMJ Case Rep* Published online: [please include Day Month Year] doi:10.1136/bcr-2015-213865

Extra cutaneous findings include pulmonary cysts, spontaneous pneumothorax and renal cancer.¹ Management is focused on early diagnosis and treatment of renal cancer.¹ The FLCN gene, located on the short arm of chromosome 17 (17p11.2), is responsible for this syndrome.² It codes for the protein folliculin, thought to be an oncogene suppressor protein. It has also

been linked to the mammalian target of rapamycin signalling pathway, a serine/threonine protein kinase that regulates cell growth, proliferation and survival.³

Following diagnosis of Birt-Hogg-Dubé syndrome, our patient had a renal ultrasound and thorax/abdomen CT to assess for pulmonary or renal disease. These revealed a benign renal cyst with no evidence of pulmonary cysts. She will require long-term follow-up and screening for renal carcinoma.

Learning points

- ▶ Multiple angiofibromata are associated with several genetic conditions including tuberous sclerosis, multiple endocrine neoplasia type 1 (MEN1) and Birt-Hogg-Dubé syndrome.
- ▶ Skin examination can help detect patients who may be at risk of certain malignancies and who may therefore benefit from regular cancer screening.
- ▶ Diagnosing a genetic condition has implications for both the patient and all family members.

Competing interests None declared.

Patient consent Obtained.

Provenance and peer review Not commissioned; externally peer reviewed.

REFERENCES

- 1 Menko FH, van Steensel MA, Giraud S, *et al.* Birt-Hogg-Dubé syndrome: diagnosis and management. *Lancet Oncol* 2009;10:1199–206.
- 2 Dal Sasso AA, Belém LC, Zanetti G, *et al.* Birt-Hogg-Dubé syndrome. State-of-the-art review with emphasis on pulmonary involvement. *Respir Med* 2015;109:289–96.
- 3 Kuroda N, Furuya M, Nagashima Y, *et al.* Review of renal tumours associated with Birt-Hogg-Dubé syndrome with a focus on clinical and pathobiological aspects. *Pol J Pathology* 2014;65:93–9.

Copyright 2016 BMJ Publishing Group. All rights reserved. For permission to reuse any of this content visit <http://group.bmj.com/group/rights-licensing/permissions>.
BMJ Case Report Fellows may re-use this article for personal use and teaching without any further permission.

Become a Fellow of BMJ Case Reports today and you can:

- ▶ Submit as many cases as you like
- ▶ Enjoy fast sympathetic peer review and rapid publication of accepted articles
- ▶ Access all the published articles
- ▶ Re-use any of the published material for personal use and teaching without further permission

For information on Institutional Fellowships contact consortiasales@bmjgroup.com

Visit casereports.bmj.com for more articles like this and to become a Fellow