

# Rare combination of paramolar and distomolar supernumerary teeth in a 15-year-old male adolescent

Pratik B Kariya,<sup>1</sup> Rachappa Mallikarjuna,<sup>1</sup> Sweta Singh,<sup>2</sup> Vinay Mulchandani<sup>1</sup>

<sup>1</sup>Department of Pedodontics and Preventive Dentistry, KM Shah Dental College and Hospital, Vadodara, Gujarat, India

<sup>2</sup>Department of Public Health Dentistry, Babu Banarasi Das College of Dental Sciences, Lucknow, Uttar Pradesh, India

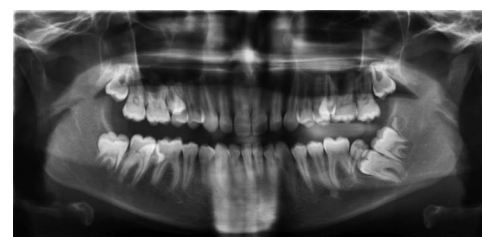
## Correspondence to

Dr Rachappa Mallikarjuna, mmrachappa@gmail.com

Accepted 10 July 2014

## DESCRIPTION

A 15-year-old boy reported with extra teeth in his upper left and right back region since 4–5 years. Medical and family history did not reveal any related positive findings. On detailed intraoral examination, supernumerary teeth were found distopalatal to the maxillary second premolar bilaterally. The maxillary supernumerary teeth morphologically resembled the premolar on occlusal aspect (figure 1). Another supernumerary tooth was identified on right lingual aspect of the mandibular first molar (figure 2). There was no history of pain, swelling or discomfort to the patient. On orthopantomogram examination the aforementioned three supernumerary teeth were confirmed, in addition to this two other supernumerary molars were also noticed in the left mandibular region (figure 3). One of the left mandibular supernumerary molars was obstructing the eruption of second



**Figure 3** Orthopantomogram of a 15-year-old child showing paramolar and distomolar in the maxillary and mandibular arch.



**Figure 1** Intraoral photograph showing bilateral paramolar supernumerary teeth in the maxillary arch.



**Figure 2** Intraoral photograph showing unilateral paramolar supernumerary teeth on the left side of the mandibular arch.

molar and the other was presenting distal to the third molar. Supernumerary teeth occurring on the buccal or the lingual side are referred to as paramolars and those appearing on the distal surface of the third molar as distomolar or fourth molar.<sup>1</sup>

A supernumerary tooth can be defined as one that is additional to the normal series and can be found in almost any region of the dental arch.<sup>2</sup> Multiple supernumerary teeth are commonly associated with developmental anomalies such as cleidocranial dysplasia, Gardner's syndrome, trichorhinophalangeal syndrome and cleft lip and palate<sup>3</sup> but they are rarely seen without any syndromes as in our case.

The associated complications with these supernumerary teeth are like ectopic eruption, root resorption of adjacent tooth, impaction of adjacent teeth, crowding in the arch and development of cystic lesion.

## Learning points

- ▶ The clinical examination should always be supplemented with orthopantomogram radiographic examination to rule out any additional supernumerary teeth.
- ▶ Multiple supernumerary teeth may be present in absence of any associated syndrome.
- ▶ The presence of supernumerary teeth may hinder the eruption of permanent teeth.

**Competing interests** None.

**Patient consent** Obtained.

**Provenance and peer review** Not commissioned; externally peer reviewed.



**To cite:** Kariya PB, Mallikarjuna R, Singh S, et al. *BMJ Case Rep* Published online: [please include Day Month Year] doi:10.1136/bcr-2014-205000

## REFERENCES

- 1 Bolk L. Supernumerary teeth in the molar region in man. *Dent Cosmos* 1914;56:154–67.
- 2 Garvey MT, Barry HJ, Blake M. Supernumerary teeth—an overview of classification, diagnosis, and management. *J Can Dent Assoc* 1999;65:612–16.
- 3 Vichi M, Franchi L. Abnormalities of the maxillary incisors in children with cleft lip and palate. *ADSC J Dent Child* 1995;62:412–17.

Copyright 2014 BMJ Publishing Group. All rights reserved. For permission to reuse any of this content visit <http://group.bmj.com/group/rights-licensing/permissions>.  
BMJ Case Report Fellows may re-use this article for personal use and teaching without any further permission.

Become a Fellow of BMJ Case Reports today and you can:

- ▶ Submit as many cases as you like
- ▶ Enjoy fast sympathetic peer review and rapid publication of accepted articles
- ▶ Access all the published articles
- ▶ Re-use any of the published material for personal use and teaching without further permission

For information on Institutional Fellowships contact [consortiasales@bmjgroup.com](mailto:consortiasales@bmjgroup.com)

Visit [casereports.bmj.com](http://casereports.bmj.com) for more articles like this and to become a Fellow