

Images in...

Asymptomatic double aortic arch with compressed oesophagus in an adult

Nobuaki Ochi,^{1,2} Masayuki Yasugi,^{1,2} Nagio Takigawa¹

¹General Internal Medicine 4, Kawasaki Medical School, Okayama, Japan;

²Hematology, Oncology, and Respiratory Medicine, University Graduate School of Medicine, Okayama, Japan

Correspondence to Professor Nagio Takigawa, ntakigaw@med.kawasaki-m.ac.jp

DESCRIPTION

A 56-year-old man presented with epigastralgia and had lost 10% of his body weight over a period of 6 months. The results of physical examination were normal. No abnormal shadow was detected on chest x-ray (figure 1A). Oesophagography showed compression of the oesophagus (figure 1B, arrow), although the patient did not complain of dysphagia. Oesophagogastroduodenoscopy revealed

compression against the outside of the oesophagus. Three-dimensional image reconstruction of a contrast-enhanced CT scan showed an aberrant right subclavian artery (figure 1C, arrow) and double aortic arch (figure 1D, arrow and arrowhead indicate right and left aortic arches, respectively). Figure 2 showed these two aortic arches loop over the corresponding main bronchi, independently. The right aortic arch compressed the oesophagus. The patient's

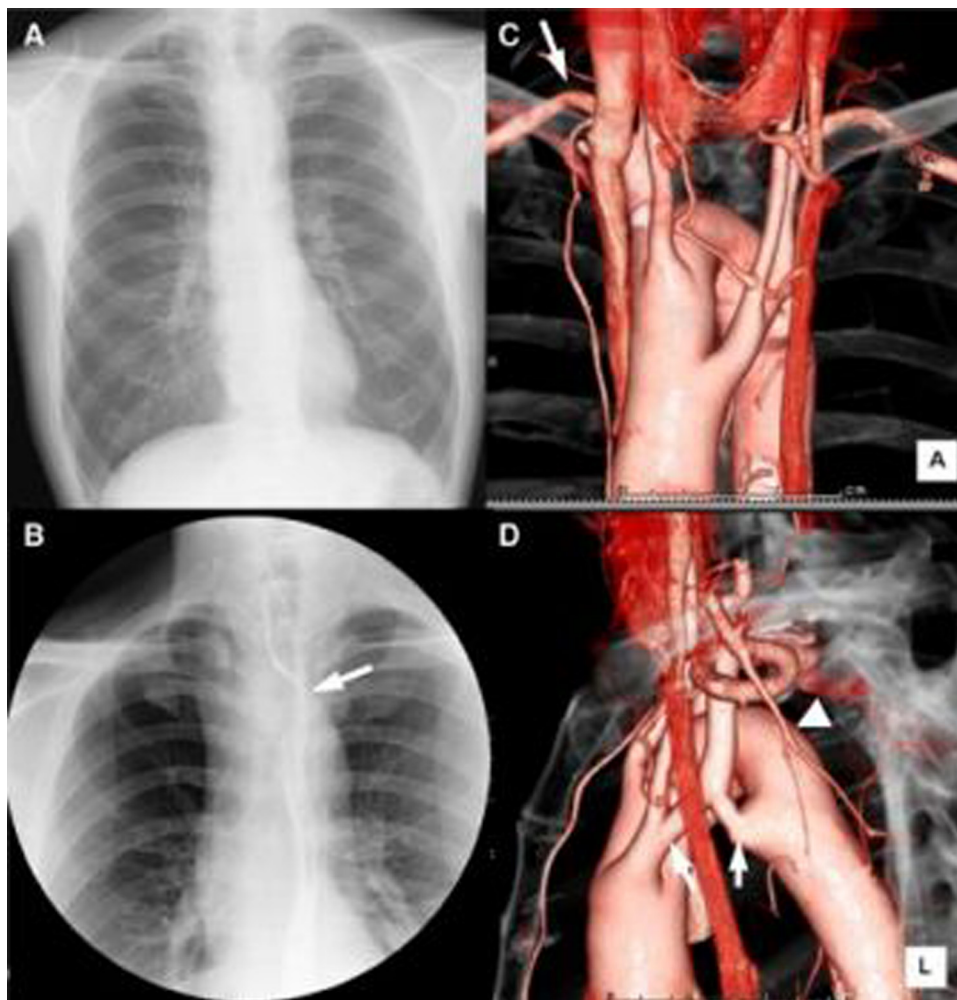


Figure 1 No abnormal shadow was detected (A). Oesophagus was compressed (B). Right subclavian artery was shown (C). Double aortic arch was shown (D).

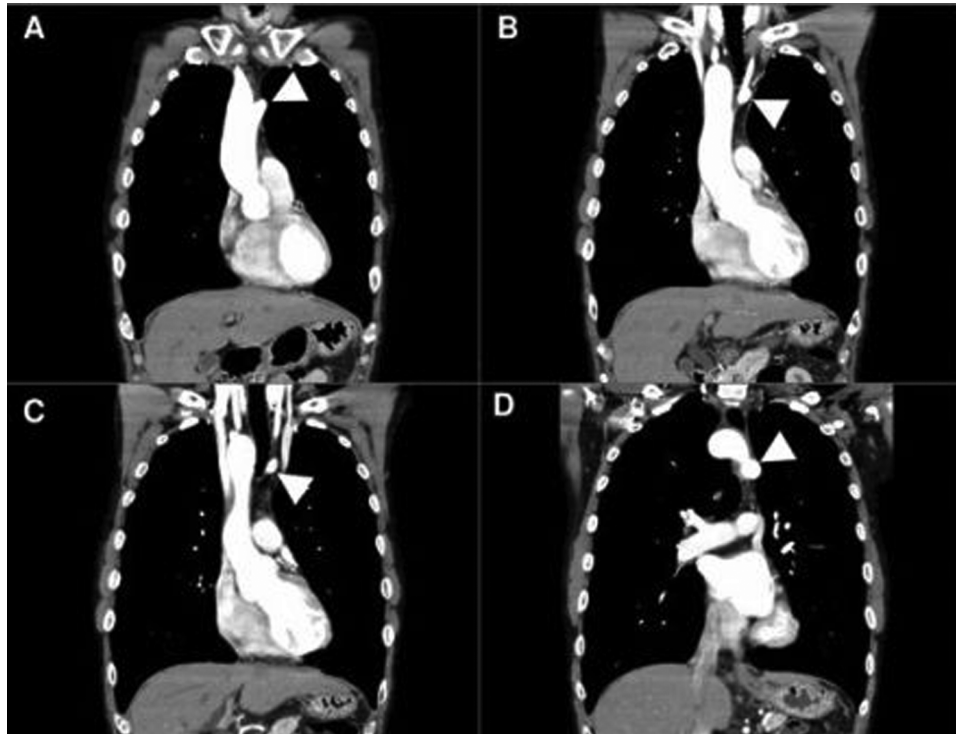


Figure 2 The two aortic arches loop over the corresponding main bronchi, independently.

symptoms at initial presentation seemed to be unrelated to compression because the epigastralgia improved with reversal of weight loss. Thus, surgical intervention is not currently planned in this case. Double aortic arch is a rare vascular congenital abnormality. With only a few exceptions, most cases are diagnosed in infancy.¹ Double aortic arch causes compression of the bronchi and oesophagus, resulting in wheezing, stridor and dysphasia. We encountered an adult patient with double aortic arch whose oesophagus was compressed by the right aortic arch. He was incidentally diagnosed with double aortic arch based on screening results for temporal epigastric pain. Moreover,

there have been few previous reports of the results of oesophagography in cases of double aortic arch in adults,² as in our case.

Competing interests None.

Patient consent Obtained.

REFERENCES

1. **Kouchoukos NT**, Blackstone EH, Doty DB, *et al*. Kirklind/Barratt-Boyes Cardiac Surgery. Third Edition. New York/Tokyo: Churchill Livingstone, Elsevier Science 2003.
2. **Olearchyk AS**. Right-sided double aortic arch in an adult. *J Card Surg* 2004;**19**:248–51.

This pdf has been created automatically from the final edited text and images.

Copyright 2012 BMJ Publishing Group. All rights reserved. For permission to reuse any of this content visit <http://group.bmj.com/group/rights-licensing/permissions>.
 BMJ Case Report Fellows may re-use this article for personal use and teaching without any further permission.

Please cite this article as follows (you will need to access the article online to obtain the date of publication).

Ochi N, Yasugi M, Takigawa N. Asymptomatic double aortic arch with compressed oesophagus in an adult. *BMJ Case Reports* 2012; 10.1136/bcr.12.2011.5315, Published XXX

Become a Fellow of BMJ Case Reports today and you can:

- ▶ Submit as many cases as you like
- ▶ Enjoy fast sympathetic peer review and rapid publication of accepted articles
- ▶ Access all the published articles
- ▶ Re-use any of the published material for personal use and teaching without further permission

For information on Institutional Fellowships contact consortiasales@bmjgroup.com

Visit casereports.bmj.com for more articles like this and to become a Fellow

Keep up to date with all published cases by signing up for an alert (all we need is your email address) <http://casereports.bmj.com/cgi/alerts/etoc>