

[Images in...](#)

Spontaneous Hickman line migration

Robert Loveridge,¹ Stas Jankowski,² Eoghan De Burca²¹Department of Anaesthesia, St. George's Hospital, London, UK;²Epsom & St. Helier NHS Trust, Carshalton, UK**Correspondence to** Robert Loveridge, robertloveridge@hotmail.com

DESCRIPTION

Spontaneous migration of subclavian Hickman lines is a recognised, albeit uncommon, complication of long-term central venous access (figure 1).^{1 2} These images show the chest radiographs of a 56-year-old gentleman with mantle cell lymphoma and mediastinal lymphadenopathy immediately following placement in preparation for outpatient chemotherapy and then again at 1 month. Ideally, the catheter should lie with the superior vena cava to minimise the

risk of complications and it should normally be seen at the level of the carina in adults on a chest radiograph.

They demonstrate that the catheter had migrated spontaneously into the ipsilateral internal jugular vein (figure 2). Risk factors for migration are thought to include catheter material characteristics, high intrathoracic pressures during physiotherapy and coughing and mediastinal lymphadenopathy. Once sited within the proximal internal jugular, the catheter is at a higher risk of a thrombosis and should

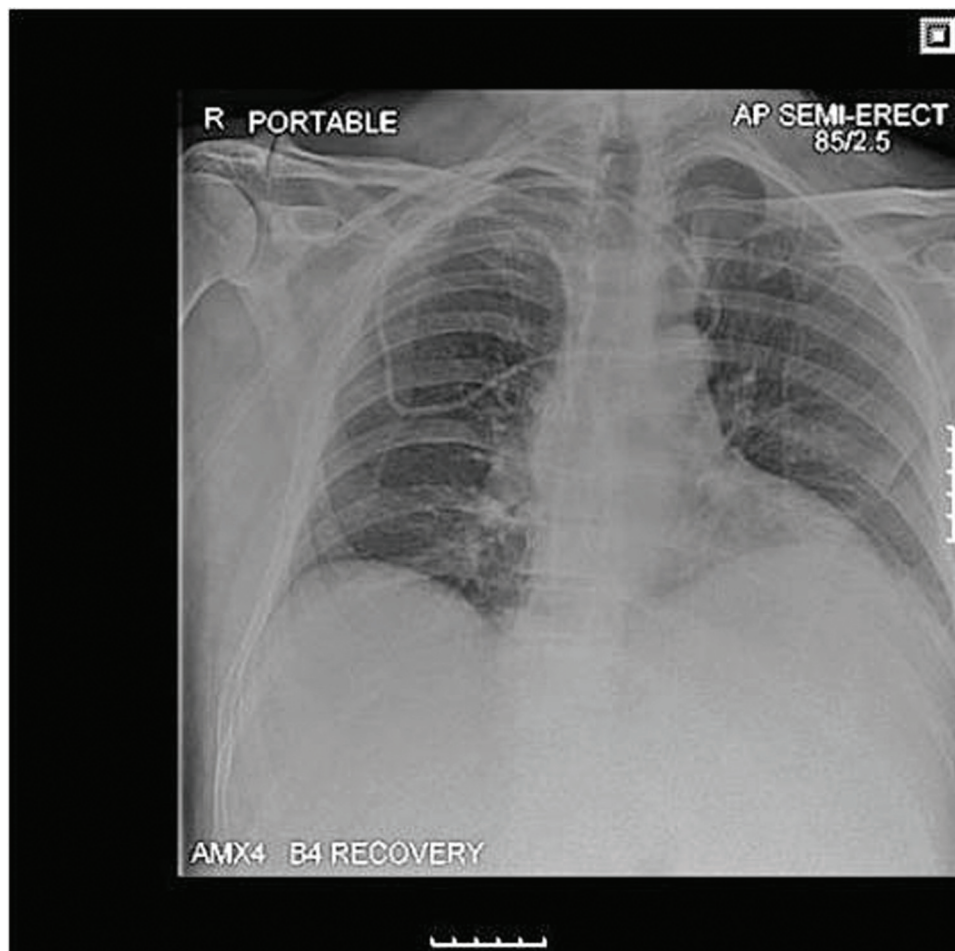


Figure 1 Right subclavian Hickman line immediately following placement.

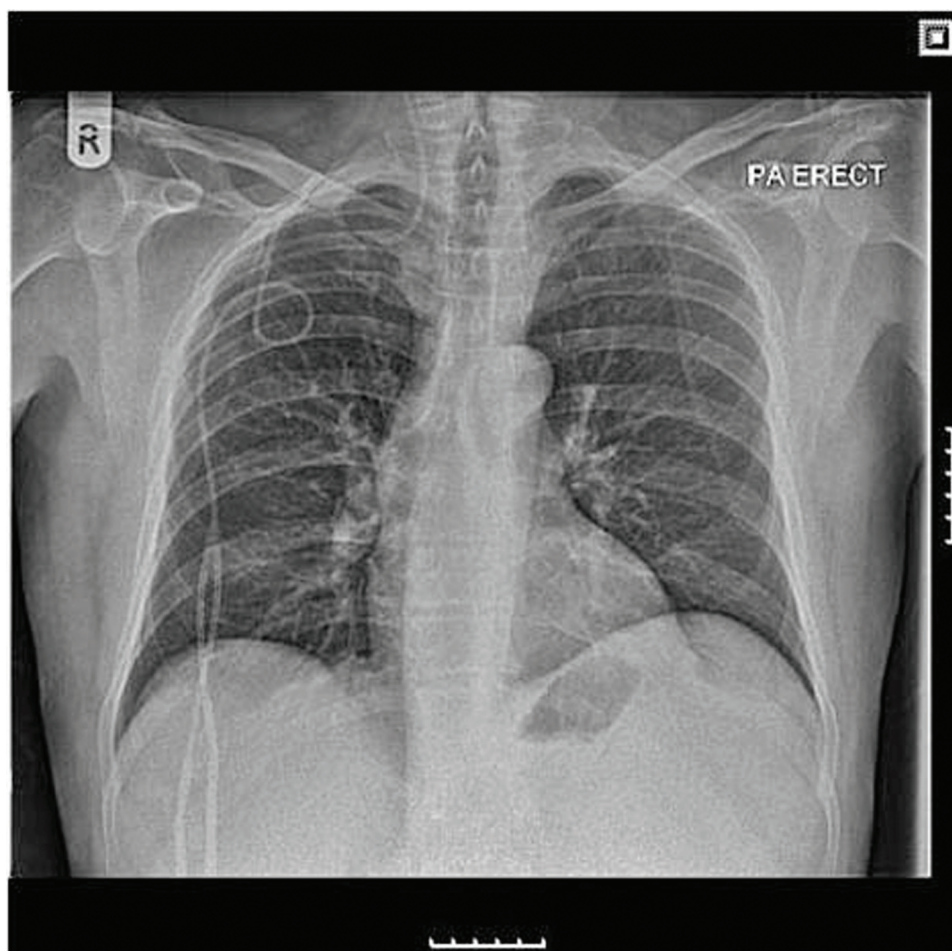


Figure 2 Chest x-ray demonstrating migration into the ipsilateral jugular vein at 1 month.

not be used for administration of chemotherapeutics just caudal to the jugular bulb.

Careful surveillance is recommended and the line was removed and re-sited without sequelae.

Competing interests None.

Patient consent Obtained.

REFERENCES

1. **Roblin D**, Porter JC, Knight RK. Spontaneous migration of totally implanted venous catheter systems from subclavian into jugular veins. *Thorax* 1994;**49**:281–2.
2. **Collin GR**, Ahmadijeh AS, Misse E. Spontaneous migration of subcutaneous central venous catheters. *Am Surg* 1997;**63**:322–6.

This pdf has been created automatically from the final edited text and images.

Copyright 2011 BMJ Publishing Group. All rights reserved. For permission to reuse any of this content visit

<http://group.bmj.com/group/rights-licensing/permissions>.

BMJ Case Report Fellows may re-use this article for personal use and teaching without any further permission.

Please cite this article as follows (you will need to access the article online to obtain the date of publication).

Loveridge R, Jankowski S, Burca ED. Spontaneous Hickman line migration. *BMJ Case Reports* 2011;10.1136/bcr.02.2011.3916, date of publication

Become a Fellow of BMJ Case Reports today and you can:

- ▶ Submit as many cases as you like
- ▶ Enjoy fast sympathetic peer review and rapid publication of accepted articles
- ▶ Access all the published articles
- ▶ Re-use any of the published material for personal use and teaching without further permission

For information on Institutional Fellowships contact consortiasales@bmjgroup.com

Visit casereports.bmj.com for more articles like this and to become a Fellow